



[www.ban-inox.rs](http://www.ban-inox.rs)

## About us

Ban-inox is a family company, created as a successor of Mileks company established in 1990, which was engaged in the production of safe deposit boxes and post boxes in banks, mechanics for electronics, tools for PVC foil welding ...

According to the changes in the market we are expanding our activities to equipping and decorating the interior and exterior of commercial and residential buildings, construction locksmith work and neutrals for the food industry.

We have been doing our business under the name of Ban-inox since 2006. Since our establishment we have been making a variety of metal objects, and we have always provided our customers with the best service, quality and favourable prices.

We successfully fulfil all the requirements of our partners with high quality and fast production, both individual and single solutions as well as large series.

Our 26 years of experience in metalworking are the best recommendation, and our reference list is the best proof of this.

The construction production program includes:

- Steel structures
- Inox (stainless steel) constructions
- Fences, railings, gates and eaves
- Residential and office containers (modular construction)
- Prefabricated buildings
- Wrought iron
- Circular and straight stairways
- Neutrals
- Stainless steel canals and drains for waste water disposal
- Protective grills
- Unique furniture
- Stainless steel barrels
- Production of meat rails (transport rails)

Construction industry products are mainly made of steel (they can be hot-dip galvanized and/or painted), and stainless steel.

The food production program includes:

- Tables
- Sinks
- Washbasins
- Racks
- Shambles
- Trolleys for smokehouses and ovens
- Trolleys for meat trays/cases
- Moulds for shaping dough and meat during drying and baking processes
- Hangers and meat hooks
- Various machine stands
- Ventilation hoods
- Knife sterilizers
- Barrels for wine, brandy, honey and other liquids in the food and chemical industry

All listed products are made from stainless steel with the quality AISI 304 or with AISI 316 at the customer's request. Most products have standardized dimensions and appearance, but upon the customer's request they can be made in sizes and appearance which are tailored to the customer, and besides the mentioned products, many other products may be developed according to the customer's drawings or samples.

We can also offer a range of metalworking services

- Mechanical cutting of sheet metal up to 12 x 4000 mm
- CNC plasma cutting up to the thickness of 40 mm
- Sheet metal bending on CNC abkant press 120T x 4000 mm
- rotary bending of sheet metal up to 6 x 2000 mm
- Pipe bending on a triple roller and mandrel
- Welding of steel, stainless steel and aluminium
- Installation of panels
- Machining on CNC and convection machines
- Processing of large pieces 4000 x 2000 mm on CNC boring machine ILR BG130P



Application of steel structures in civil engineering:

Buildings – sports halls, exhibition halls, multi-storey buildings, industrial halls, stadium or hangar roofs, ...  
 Bridge-building – road bridges, railway bridges, combined bridges, pedestrian bridges ...  
 Special (engineering) structures, masts, transmission line towers, industrial chimneys, silos, tanks, pipelines, offshore platforms.

The positive features (advantages) of steel structures: High levels of mechanical properties. Small element dimensions and weights, industrialized production – high quality, easy manipulation, transport and installation, easier and cheaper foundation, lower sensitivity to seismic loads, flexibility and adaptability, dismantling option and lasting value, light and easy repair and reconstruction.

The disadvantages of steel structures: Sensitivity to the effects of corrosion.  
 Sensitivity to fire. More highly qualified workforce required.

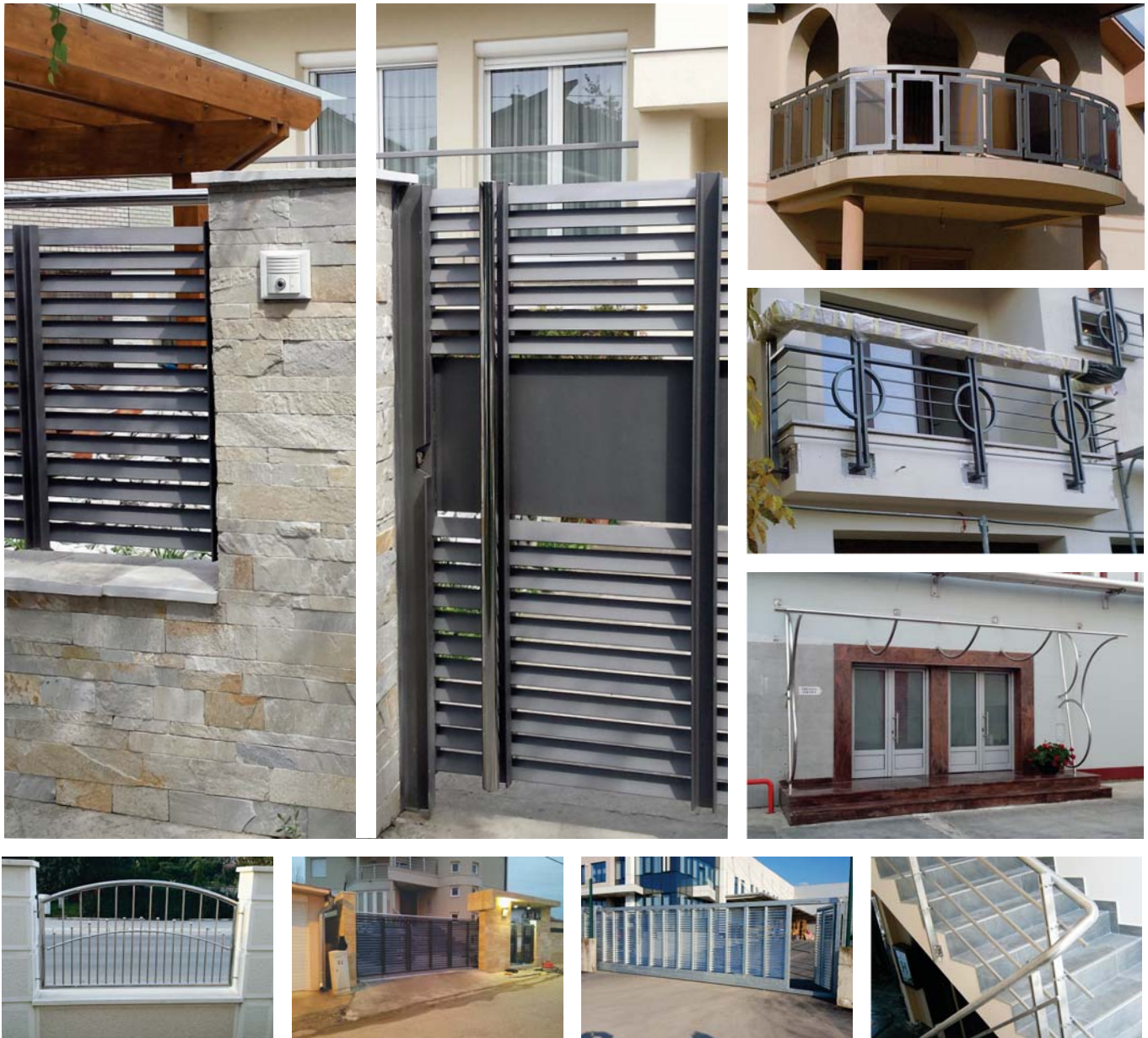




Inox, chromium plated steel, rostfrei, stainless steel (DE: Rostfreier Stahl – rustless steel)  
(EN: INOX - inoxidizing, which means preventing oxidation, rusting or rotting),  
is steel alloyed primarily with chromium and nickel. In 1913,  
while working on a project to improve gun pipes, the English metallurgist Harry Brearly accidentally  
discovered that adding chromium to low carbon steel made it resistant to damage and corrosion

INOX is modern and attractive, hygienic and easy to clean, corrosion-resistant, durable,  
good for maintenance, suitable for production and eventually positively oriented towards nature  
conservation because it is completely recyclable.

Nowadays, stainless steel is widely used because of its anti-corrosive and non-magnetic properties,  
thus it is used in construction, food and chemical industry, furniture industry, medicine  
and even the production of jewellery.



Gates, fences, railings and eaves  
Can be made of steel, stainless steel and wrought iron.

Those made of steel and wrought iron can be hot-dip galvanized in order to be protected against corrosion, and then painted or just painted, while those made of stainless steel may be brushed or polished depending on the investor's requirements.





Housing and office containers are simple, functional and fast solution to lack of space for living or working in the field, they are also a great solution for all families affected by various natural and unnatural disasters.

A standard 20ft container is manufactured in dimensions 6000 x 2400 x 2400 mm, the length of the container can be between 3000 and 12000 mm, and upon a customer's request it can be manufactured in other dimensions, but also by combining several standard containers a whole village can be constructed.

Upon a customer's request, the containers can be equipped with toilets, bathrooms and kitchens with complete water and sewage installation.

Due to transport expenses savings the containers are sent to remote destinations in a transport packaging (disassembled).



Prefabricated buildings are made for production, warehouses, offices and other needs. They can be covered with sandwich panels or trapezoidal sheet metal depending on the needs of investors.

## Layout of a prefabricated building

Hall – a building constructed with one or more naves.

Nave – a part of the hall formed by a series of pairs of parallel pillars.

Plane – a part of the nave limited with opposing pairs of pillars.

The main structural units of the main carrying system of a single-nave hall are:

A roof structure (main trusses, rafters, reinforced beams and ties)

The main pillars of the hall with an anchoring system.

The structure of large-scale and possibly partition walls (facade bolts and pillars)

Composite beams (roof, vertical, lateral impact, brake beams)

Additional elements (platforms, staircases, skylights, ventilation, etc.).

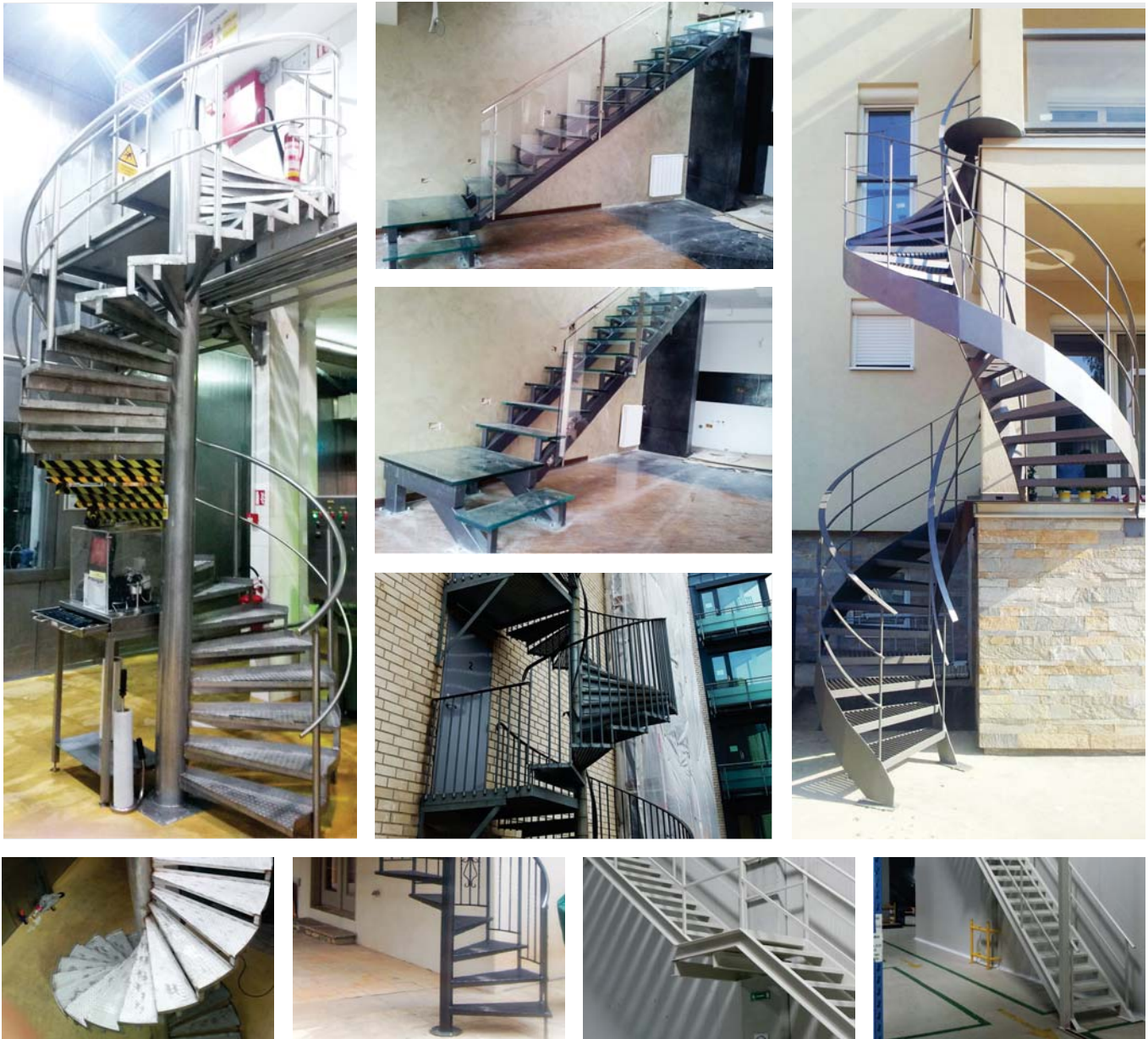




Forging technology is one of the oldest and most widely used metal forming processes by deforming it. Since the ancient times wrought iron has adorned palace complexes, castles and houses of prominent people. Nowadays, wrought iron is commercialized using machines for its production and it is accessible to almost everyone.

Forging used to be done manually and by heating the metal with blacksmith fire, while today forging is mainly performed by machines, and warming is mainly done by burners or induction process in the induction coils.





In designing houses or apartments on several levels, one of the most important details is the stairwell. For some people a status symbol, for others an opportunity to show luxury and power, and for the rest only a way to the next floor or the attic.

The staircase can be single-flight, double-flight with or without a landing, triple-flight or circular. Your available space dictates which type is the most appropriate for the application. Stairways made of metal have many advantages, lightweight design, faster production, a large selection of models, and they also serve as an aesthetic detail.





Neutrals include:

- Tables
- Sinks
- Washbasins
- Shambles
- Trolleys for smokehouses and ovens
- Trolleys for meat trays/cases
- Moulds for shaping dough and meat during drying and baking processes
- Hangers and meat hooks
- Various machine stands
- Ventilation hoods
- Knife sterilizers
- Barrels for wine and brandy

All listed products are made from stainless steel with the quality AISI 304 or at the customer's request AISI316. Most products have standardized dimensions and appearance, but upon the customer's request they can be made in sizes and appearance which are tailored to the customer, and besides the mentioned products many other products may be developed according to the customer's drawings or samples.







## Drains and canals for waste water discharge

They are mainly used in the food and chemical industry. They are made of stainless steel sheet with the quality AISI 304 or AISI 316.

They are available in various widths and depths, depending on the amount of water they need to accept and they can have an unlimited length. There are several types of cover grids. Honeycomb grid made of flat steel is used for pedestrian crossing and light loads transport, while the grids made of steel plates are used for heavy traffic.

The canals have an integrated drain slope of 0.5-1%.

Drains have a cart for collecting bulky waste and a grid on the drain pipe which prevents the passage of solid waste into the sewage.

Our drains and canals are found in the food and chemical production facilities of:

Coca Cola HBC Zemun  
Neoplanta Meat Industry  
Rauch Serbia  
Marbo product-Pepsi Co  
Kristal so  
Monbat





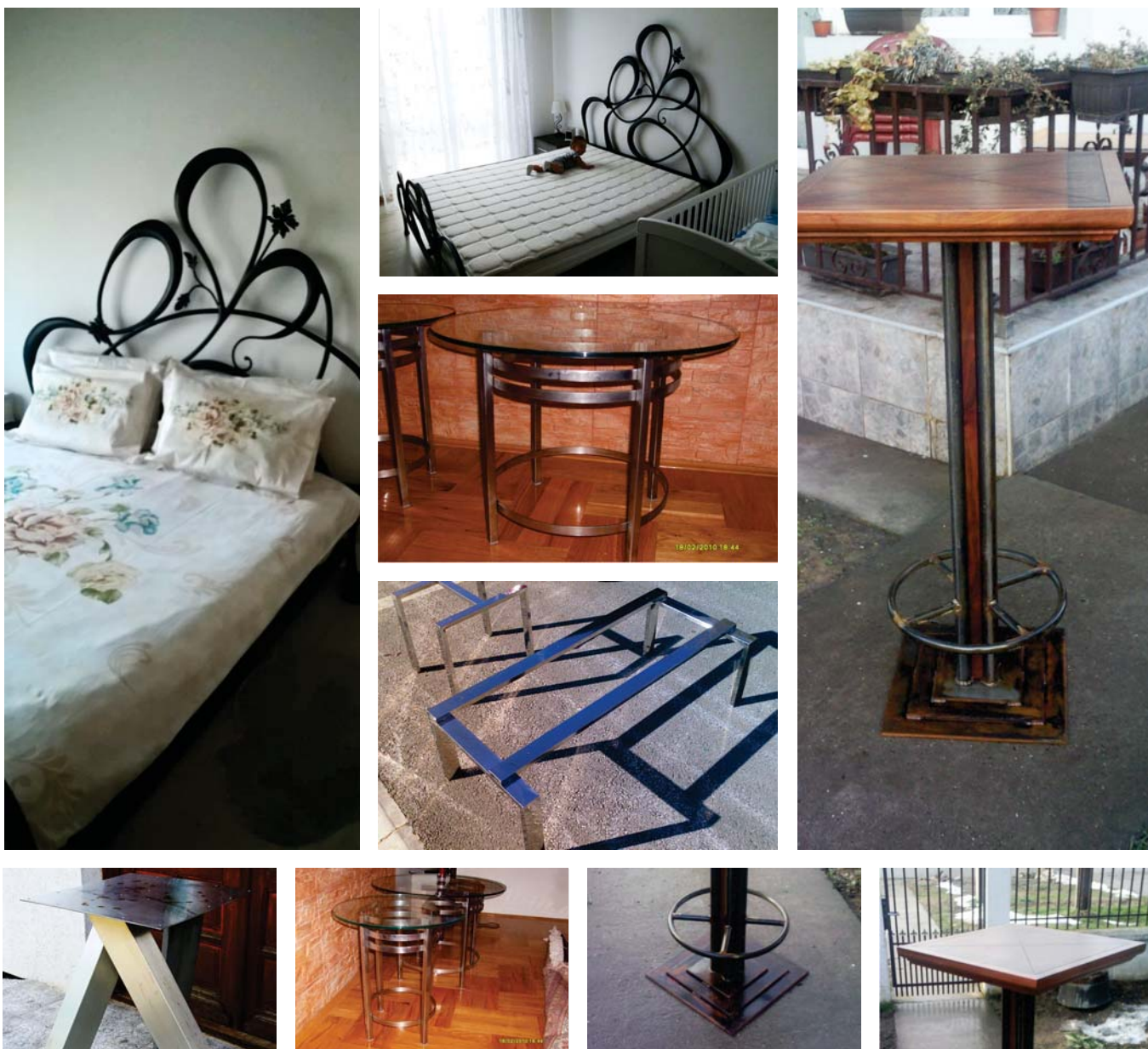


The old method of securing doors and windows still works, grills are a good functional solution against burglars, but also a beautiful aesthetic detail.

Window grills can be fixed or opening ones.

Made of wrought iron, box profiles or stainless steel profiles and tubes, they can protect and beautify your home or office.





Unique furniture made of metal or combination of metal, wood and polyester gets an artistic character and can make the space more beautiful and pleasant to stay in.

Such furniture requires a good idea, skilled hands and a lot of work and efforts to create, but the effect which is obtained compensates for all the difficulties in its making.



Containers for wine, brandy and other liquids in the food and chemical industry

The containers are made of stainless steel with the quality AISI304 or if necessary AISI316. For wine they are vertical and have a "floating cap" which sinks with the wine and does not allow the contact of the wine with the air, so the wine cannot oxidize and go bad. They are made in sizes of 5 – 700 L. Brandy containers can be horizontal and vertical, and are made with a cap which hermetically closes them.

Horizontal ones are made in sizes of 5 – 50 L, and vertical ones in sizes 5 – 700 L.

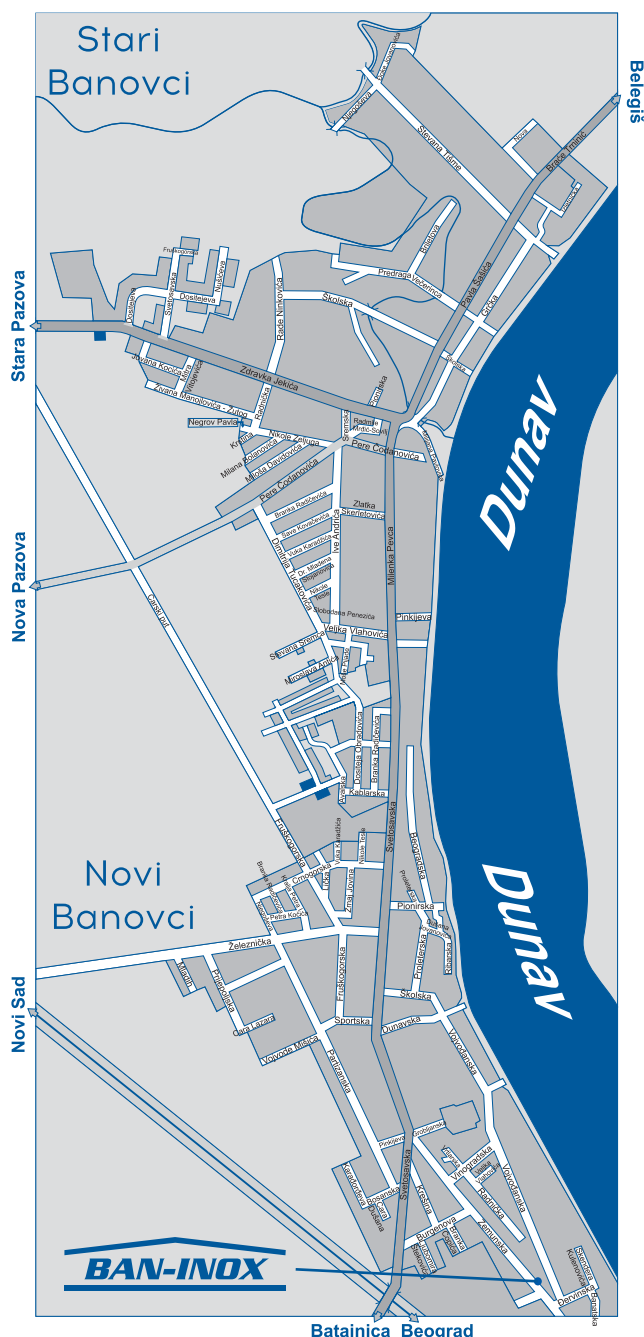
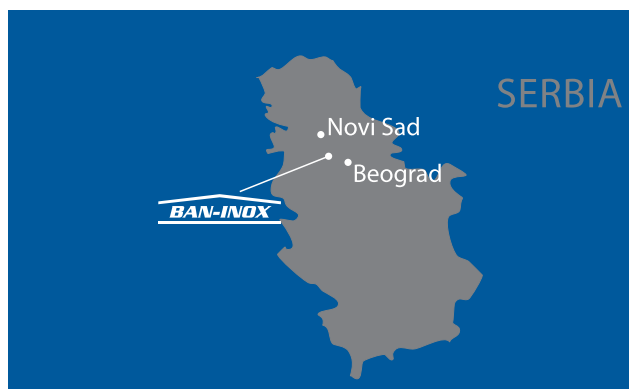
The advantages of stainless steel containers are easy maintenance and washing, stainless steel does not absorb liquids, it is light weight in relation to the volume of the container. In order to achieve the effect of a wooden barrel, wooden planks can be laid into the wine and brandy.

Containers made of stainless steel can be used for all kinds of liquids, gels and other substances in the food and chemical industry, and can be produced at volumes of up to several thousand litres.



## Reference list

Aerodrom Nikola tesla Serbia  
Alda biro Serbia  
Atrium consulting d.o.o. Serbia  
ABM ART Consulting d.o.o. Serbia  
Albi-pro d.o.o. Serbia  
Alimpex d.o.o. Serbia  
Algar d.o.o. Serbia  
Amigo kompani d.o.o. Serbia  
Beobanka a.d. Serbia  
Big picture d.o.o. Serbia  
Bauwesen d.o.o. Serbia  
Burjan d.o.o. Serbia  
Base4living Denmark  
BS Telecom Solutions d.o.o Bosnia and Herzegovina  
BT beton gradnja d.o.o. Serbia  
Centrobanka a.d. Serbia  
Credibel banka a.d. Serbia  
Carnex AD Serbia  
Coca-Cola HBCompany Serbia  
CAF S.A. Spain  
Cyber: Few Good Men Serbia  
Control banka a.d. Serbia  
Dorado energy SZR Serbia  
Dinara banka a.d. Serbia  
Delta banka a.d. Serbia  
D.N Renovation Switzerland  
Dabi Soudure Sàrl Switzerland  
Dane-Wood A/S Denmark  
Dabel d.o.o. Serbia  
Deus sistem d.o.o. Serbia  
Eko izgradnja d.o.o. Serbia  
Euchem d.o.o. Serbia  
Eko elektrofrigo d.o.o. Serbia  
Edil d.o.o. Serbia  
Energio-zelena d.o.o. Serbia  
Euro bravo d.o.o. Serbia  
Eaton electric d.o.o. Serbia  
Euro mobile Serbia  
Fiba d.o.o. Serbia  
Frozen fruit d.o.o. Serbia  
Force&forma d.o.o. Serbia  
Feniks-bus d.o.o. Serbia  
Foresto metal Serbia  
Grossoptik d.o.o. Serbia  
Gumel-pumpe d.o.o. Serbia  
Grappa d.o.o. Serbia  
Gecom d.o.o. Serbia  
Galeb GTE Serbia  
Gozba d.o.o. Serbia  
Galeb FSU AD Serbia  
Gumoprofil Serbia  
Grand prod d.o.o. Serbia  
Huni Italia Srl Italy  
HM Hoch und Tiefbau GmbH Germany  
HE Djerdap Serbia  
Invest banka a.d. Serbia  
Institut Mihajlo Pupin Serbia  
ISTOBAL, S.A. Spain  
Integrity Worldwide Inc. Canada  
Ikea d.o.o. Serbia  
IM Matijevic d.o.o. Serbia  
Interclean d.o.o. Serbia  
Inpharm co d.o.o. Serbia  
Jik banka a.d. Serbia  
Kota d.o.o. Slovenia  
Kan media d.o.o. Serbia  
Kristal so d.o.o. Serbia  
Koka prom Serbia  
Keops constructions d.o.o. Serbia  
Koteks d.o.o. Serbia  
K.B.M. d.o.o. Serbia  
LB mont Serbia  
Lorast d.o.o. Serbia  
MB ASI banka d.d. Serbia  
Menadzer Serbia  
Modulux Sarl Luxembourg  
Mercator Slovenia  
Metro cash & carry d.o.o. Serbia  
Masel group d.o.o. Serbia  
Mezosystem d.o.o. Serbia  
Mile Dragic Production Serbia  
Mark-trade d.o.o. Serbia  
MP Invest d.o.o. Serbia  
Mesopromet company d.o.o. Serbia  
Majur group d.o.o. Serbia  
Neoplanta AD Serbia  
Nelt Co. Serbia  
NTM International LTD England  
Network co AD Serbia  
Pons gradnja d.o.o. Serbia  
P.R. Immobilier Sarl Switzerland  
PKS interiør & industri AS Norway  
Podgorina frucht d.o.o. Serbia  
Reprom d.o.o. Serbia  
RM Alkon stahl d.o.o. Serbia  
Skopska komercijalna banka Macedonia  
Stolichny bank Russia  
Sber bank Russia  
Smelt d.d. Slovenia  
S Frigo d.o.o. Serbia  
Stojnic mont Z.R. Serbia  
Smart-plus d.o.o. Serbia  
Stamevski d.o.o. Serbia  
SMKR SAŠA d.o.o. Serbia  
SR Obim Serbia  
SMPR Pam alatnica Serbia  
Tunalux d.o.o. Serbia  
Todebo d.o.o. Serbia  
TT metal-inox Serbia  
Termoplast SZR Serbia  
Serbia agro d.o.o. Serbia  
Terboinox d.o.o. Serbia  
TPUR Paradise food Serbia  
Vodo Karin d.o.o. Serbia  
Vojno tehnicki institut Serbia  
Veranex d.o.o. Serbia  
Veterinar tim d.o.o. Serbia  
Yunip d.o.o. Serbia  
Tivinoprodukt d.o.o. Serbia  
4M d.o.o. Serbia



Novi Banovci is a village in Serbia, in the municipality of Stara Pazova, in the Srem District, on the right bank of the Danube, 12 kilometres upstream from Zemun. The place is situated 3 kilometres from Batajnica. According to the census of 2011, there were 9443 inhabitants.

The settlement is connected with Stari Banovci, with which it forms a whole, known as Banovci, which has about 16,000 inhabitants. The highway E-75 runs next to the place and it is the main connection between Banovci and Belgrade, as well as the connection between Banovci and Novi Sad, which is only 60 km away.

A regional road also runs through the settlement and it connects Banovci with Batajnica, Zemun, Belgrade, Ugrinovci, Dobanovci, Surčin, and also there is a regional road which connects Banovci with the villages on the banks of the Danube: Belegiš, Surduk, Novi and Stari Slankamen, Krčedin, Beška, and then with Sremski Karlovci and Novi Sad. There are also regional roads Banovci-Nova Pazova-Šimanovci and Banovci-Stara Pazova-Indija-Golubinci-Putinci-Ruma-Sremska Mitrovica.

The area in which Novi Banovci is located has been inhabited since ancient times. In the village there is a Roman archaeological site Burgena, Lat. Burgenae. Novi Banovci represented the crossroads between East and West, and even today in the centre of the town there is a house called Janeskina kafana ("Janeska's cafe") which had been used as a shelter for all soldiers and merchants who travelled to Istanbul and Vienna during the Turkish times.

The place began to develop rapidly in early 1980, when a new residential settlement Banovci-Dunav popularly called "Kablar" sprung into existence between Novi and Stari Banovci.

**Representative in the US**  
**Sasha Djordjevic**  
**+1 9495109569**

**djsasayu@yahoo.com**  
**djsasayu@ban-inox.com**

**8685 Rio San Diego Drive**  
**#4223**  
**San Diego, CA, 92108**

**Phone**  
**+381 22 341 436**  
**+381 63 341 436 - Vladimir**  
**+381 63 396 743 - Branislav**

**e-mail**  
**kele@ban-inox.rs**  
**bane@ban-inox.rs**

**Adress**  
**Zemunska 94b**  
**Novi Banovci, Srbija**

**Web site**  
**www.ban-inox.rs**